

SMART DESIGN
FOR YOUR SMART LIVING



PRODUCT CATALOG

WINDSOR
Vinyl Doors & Windows

WINDSOR 

SMART DESIGN FOR YOUR SMART LIVING



Change your perspective on living and make every day fulfilling with inspiration and comfort. "WINDSOR" vinyl window and door systems are developed with specially formulated vinyl materials and functional designs tailored to suit the Thai lifestyle. Providing superior protection from external factors through a variety of designs and colors that seamlessly complement any architectural style.



Less manufacturing
energy used.



Strong and
Durable



Recyclable



Environmentally
Friendly



ADVANCE VINYL TECHNOLOGY

Under the hot and humid climate, homes and their residents require special protection and care. WINDSOR has therefore developed unique vinyl technology with special properties.



UV STABILIZER

UV-reflecting substance.



ANTI-STAIN

Anti-stain substance.



HEAT STABILIZER

Heat resistance enhancer.



PREMIUM COLOR

Premium-grade color without fading with lamination film technology to make the texture different from ordinary paint.



IMPACT MODIFIER

Flexibility enhancer for increased resistance to impacts and compressive forces.

PREMIUM COLOR

Fulfilling the needs of every design style with a wide range of color options, complemented by high quality lamination film that meets German standards. Produced with advanced fabrication technology, ensuring your home remains beautiful for years to come.

COOL PIGMENT

Specially formulated vinyl, with heat-reducing properties, enhances the durability and extends the lifespan of doors and windows.

PUR HOT MELT ADHESIVE

Premium-grade special adhesive ensures the lamination film adheres firmly, remains durable, and does not peel off.

ULTIMATE PROTECTION



Noise Protection

diminishes external noise by up to 32 decibels, performing 40% better than conventional aluminum frames.

Tested in accordance with international standard ASTM E90.



Heat Protection

Reduces heat transfer into the building more effectively than standard aluminum frames, helping save on electricity costs by over 9,144 THB per year.*

Tested in accordance with international standard ISO 8990. The reduced electricity cost is calculated based on a detached house with a usable area of 150 sq.m, referencing an external temperature of 32°C in April 2024.



Leak Protection

Prevents air and rainwater infiltration under a pressure of 300Pa, while withstanding wind forces of up to 2000Pa.

Tested in accordance with international standards ASTM E331, ASTM E283, and Thai Industrial Standard (TIS) Class 5



Pollution Protection

Shields interiors against pollution and PM2.5 dust from entering the home up to 3 times* more effectively compared to standard materials.

Tested the infiltration of external pollution into the house using a smoke-generating device with particle sizes comparable to PM2.5 (tested in March 2024).

SIGNATURE^{PRO} SERIES



BORDERLESS SPACE

WIDER FOR GREATER
FREEDOM



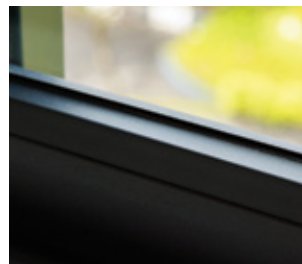
Premium quality hardware,
European standards



Single-Point Lock /
Multi-Point Lock System



Seamlessly join frame
corners with ultra-thin
corner welds of 0.2 mm.



Unique finish and texture
with German lamination
films, offering heat protec-
tion 4 times more effective
than traditional films

SLIDING SYSTEM



Maximum width of 5.6 m and height of 3 m, supports multi-track sliding doors



Strong frames designed to support large panels, for easy and smooth use.



Tight locking system throughout the frame to ensure durability and safety.

Frame	Frame depth of 10 cm, level with the wall.
Glass Thickness	Supports a maximum glass thickness of 24 mm and different types of glass installations including insulated glass.
Locking System	Single-Point Lock / Multi-Point Lock



Built-in insect screen rails, thus no additional rails required.

COLOR Options



Glorious White



Graphite Grey



Brilliant Black



Dark Walnut



Amber Teak

SIGNATURE SERIES



UNIQUENESS OF LIVING

SUPERIOR DESIGN
OUTSTANDING UNIQUENESS



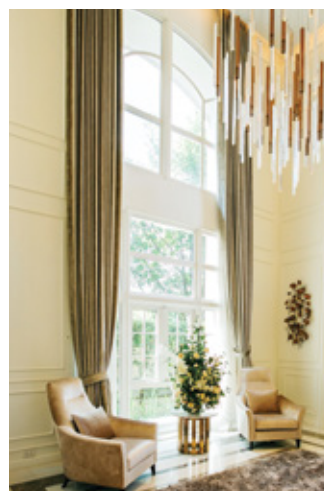
Galvanized reinforcement steel to strengthen the entire frame and panel.



Single Point Lock /
Multipoint Lock
System



European standard
hardware quality.



Tall, open and luxurious with
support for extra large
designs of up to 3 meters.



Seamlessly join frame corners
with ultra-thin corner
welds of 0.2 mm.

SLIDING SYSTEM



Sliding Frame Cover
Sliding frame cover for enhanced refinement and dust prevention.



Multipoint Lock
Double lock system improves safety and durability.



Smart Design Frames
to prevent air leaks and prying.



Concealed Drainage Holes under Sliding Frame
to promote effective drainage and reduce outside noise penetration.

CASEMENT SYSTEM



Double lock system
for air ventilation.



Level 1
Tight panel locking.



Level 2
Panel locking with gap for indoor ventilation.



Double Rubber Trim
to enhance noise, dust and water leak prevention.



3D Hinge System
to effectively support panel weight and prevent panels from falling.

Frame	Frame depth of 10 cm, level with the wall.
Glass thickness	Supports a maximum glass thickness of 24 mm and different types of glass installations including insulated glass.
Locking System	Single Point Lock / Multipoint Lock

COLOR

Color Choices



Glorious White



Brilliant Black



Dark Walnut



Amber Teak

RIGHT XTEND SERIES

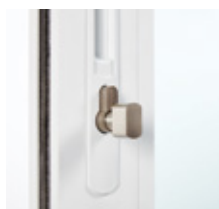


PERSPECTIVE EXTENDED

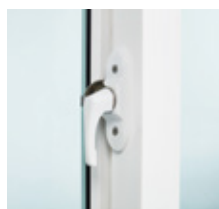
TAILORED TO YOUR NEEDS,
FULFILLING EVERY DESIGN CHALLENGE



10-cm frame depth,
level with the wall,
provides a seamless
appearance.



6-Pin Lock for
maximum safety



Extra Middle Lock
for enhanced
sturdiness



supports multi-track sliding doors
with maximum height of 2.7 m.

SLIDING SYSTEM



6-Pin Lock
for maximum
safety



Xtra Middle Lock
for enhanced
sturdiness



Anti-Lift System
for confidence
in safety

CASEMENT SYSTEM



Double Rubber Seals
to enhance prevention
against noise, water
and pollution.



Panel-over-Frame
Design for tight closing
to prevent water and
air penetration.



Built-in Drip Cap to
reduce water contact
with the frame to
prevent leakage.

Frame	Frame depth of 10 cm, level with the wall.
Glass Thickness	Supports a maximum glass thickness of 10 mm and different types of glass installations.
Locking System	Single-Point Lock / Multi-Point Lock

COLOR Options



Brilliant Black



Graphite Grey



Modern Grey



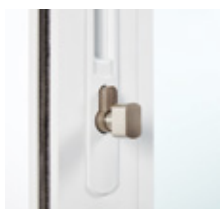
Glorious White

RIGHT BASIC SERIES



IMPRESSIVE DESIGN

MODERN SIMPLICITY,
COMPLETE FUNCTION



6-pin lock for
maximum safety.



Extra lock in the
middle of the panel for
enhanced security.



Anti-lift device.



Slim Design

Slim frame sized just 8 cm
for a more modern home
design.

SLIDING SYSTEM



Built-in Mesh Railing
No need to install additional railing.



Railing Ridge Reinforcement
with aluminum for smooth opening.



Concealed Drainage Holes underneath the Railing
for effective water drainage and noise disturbance reduction.

CASEMENT SYSTEM



Double Rubber Trim
to enhance noise, dust and leak prevention.



Panel-over-Frame Design
for tight closing to prevent intrusion by water and air.

Frame	Slim frame size of 8 cm with support for pre-cast wall installation.
Glass thickness	Supports a maximum glass thickness of 6 mm and many different types of glass installations.
Locking system	Single Point Lock / Multipoint Lock

COLOR

Color Choices



Brilliant Black



Graphite Grey



Modern Grey



Glorious White



Dual





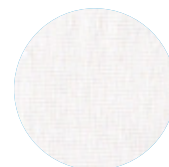




ACCESSORIES



Anti-Insect Vinyl



Standard Model



Pet-Friendly Model

- Because the vinyl frame is manufactured according to WINDSOR's special formula, is durable and capable of withstanding every use.
- Designed especially for installation with WINDSOR's vinyl doors and windows.
- The fiber mesh is durable and promotes good ventilation.
- Felt fabric prevents intrusion by insects or critters.

HARDWARE



Quality Control

100% quality control with an ISO-9001-compliant factory system.



Cycle Test

All hardware and equipment have undergone a minimum of 30,000 cycle tests or equivalent to 5 years of normal use.



Salt Spray Test

All hardware and equipment have undergone salt spray testing according to international standards under simulation of moisture, acid, alkalinity, salt spray and sulfur dioxide pollution conditions for 48 hours and 96 hours according to BS EN 1670 standard.

COLOR



Amber Teak



Dark Walnut



Glorious White



Modern Grey



Graphite Grey



Brilliant Black



Finishing trim

2-cm decorative finishing trim closes gaps between the panel frame and plaster edges for greater refinement.
(For Signature, Smart Valuemax and Right models.)



Muntin

2-cm and 4-cm muntin for greater refinement and elegance.

VARIETY OF DESIGN & FUNCTION

A variety of functions are available for selection.

Standard Design



Single open-panel door.



Double open-panel door.



Alternating panel door.



4-panel sliding door.



Single open-panel window.



Double open-panel window.



Alternating sliding window.



4-panel sliding window.



Awning window

Special Design



Hanging door panel.



Round skylight.



Curved skylight.



Louver



Louver



Multitrack door/
window.



WARRANTY

10

YEARS
LIMITED
WARRANTY

10-year frame and panel
warranty.

*10-year warranty for white color.
5-year warranty for other color.

1

YEARS
LIMITED
WARRANTY

1-year warranty for
equipment and hardware

1

YEARS
LIMITED
WARRANTY

1-year warranty
for installation.

WORLDWIDE QUALITY STANDARD

World-class Quality

WINDSOR's doors and windows are certified according to ISO9001, ISO14001, ISO45001 and ISO50001 industrial standards and quality certification for products made in Thailand under the Made in Thailand (MIT) symbol by the Federation of Thai Industries.





PRICE MATRIX CALCULATION

Preliminary price calculation.



Scan QR code

to obtain a preliminary price calculation for doors and windows.

Inquire for Product Details from Branches Across the Country

Central Region: Bangkok Metropolitan Region • Mitaphai Co., Ltd., Tel.: 02-9381790, 02-7318050 • Vinyl Creation & Trading Co., Ltd., Tel.: 02-3735358-9 • Witsanu Techno Plus Co., Ltd., Tel.: 02-9688960-1 • T&T Opening Co., Ltd., 087-5542227 • Saeng Thong Witsawakit Co., Ltd., Tel.: 02-3609388-9.

Northern Region: Phitsanulok • Thai Vinyl Co., Ltd. (Phitsanulok Branch), Tel.: 055-335235-7, 055-212237. **Chiang Rai** • Monchari Co., Ltd., Tel.: 053-719888, 086-4215288. **Chiang Mai** • Wiraphaniti Chiang Mai Co., Ltd., Tel.: 053-345445-7, 088-2586806 • Thai Vinyl Co., Ltd. (Chiang Mai Branch), Tel.: 053-279997.

Lam Pang • Thai Vinyl Co., Ltd. (Lam Pang Branch), Tel.: 054-316264. **Nakhon Sawan** • Thai Vinyl Co., Ltd. (Nakhon Sawan Branch), Tel.: 056-221242.

Northeastern Region: Nakhon Ratchasima • Witsanu Techno Plus Co., Ltd. (Korat Showroom), Tel.: 081-823-3063. **Roi Et** • Kanruchi Limited Partnership Tel.: 087-1018999, 043-624424. **Ubon Ratchathani** • Vinyl Pro Works (Thailand) Co., Ltd., Tel.: 045-956262, 097-3047141. **Udon Thani** • Aor. Nam Saeng Thai Co., Ltd., Tel.: 042-241797, 042-241715, 042-242988 • EKP Group Co., Ltd., Tel.: 082-1045959, 087-2235959. **Sakon Nakhon** • Nature Windsor Co., Ltd. (Sakon Nakhon), Tel.: 042-713413, 097-3146888, 085-4454334. **Khon Kaen** • Aor. Nam Saeng Thai Co., Ltd., Tel.: 065-454-4142, 081-593-5999.

Eastern Region: Chon Buri • V.B. Quality Co., Ltd., Tel.: 038-237172, 086-3063662. **Rayong** • V.B. Quality Rayong Co., Ltd., Tel.: 038-920545, 086-3899623.

Western Region: Kanchanaburi • Fa Fa House Co., Ltd., Tel.: 085-9425245, 095-6942465. **Nakhon Pathom** • Vinyl House Co., Ltd., Tel.: 034-338363, 080-4264242.

Southern Region: Phetchaburi • J&J Home Solution Co., Ltd., Tel.: 094-2545195, 032-900489, 098-9099265. **Nakhon Si Thammarat** • Nakhon Si Trang Engineering (Smart Home Nakhon Si Thammarat) Co., Ltd., Tel.: 075-312559. **Trang** • Nakhon Si Trang Engineering (Smart Home Trang) Co., Ltd., Tel.: 075-2198.

Surat Thani • Primary 22 Co., Ltd., Tel.: 062-896-8914. **Phuket** • Smart Home Phuket Co., Ltd. Phuket Branch, Tel.: 076-383386. • V.B. Quality (Phuket) Co., Ltd., Tel.: 076-261880-1.

Songkhla • Home Menu Co., Ltd., 074-243604, 074-234229

Call Center

02 555 0333

facebook.com/windsorpage
TikTok @windsorofficial

Line Official
@windsorofficial



www.windsor.co.th





Nawaplastic Industries Co., Ltd.

No. 1, Siam Cement Road, Bang Sue, Bangkok
10800

T. 02 555 0333

E. windsor@scg.com

Updated: July 2025